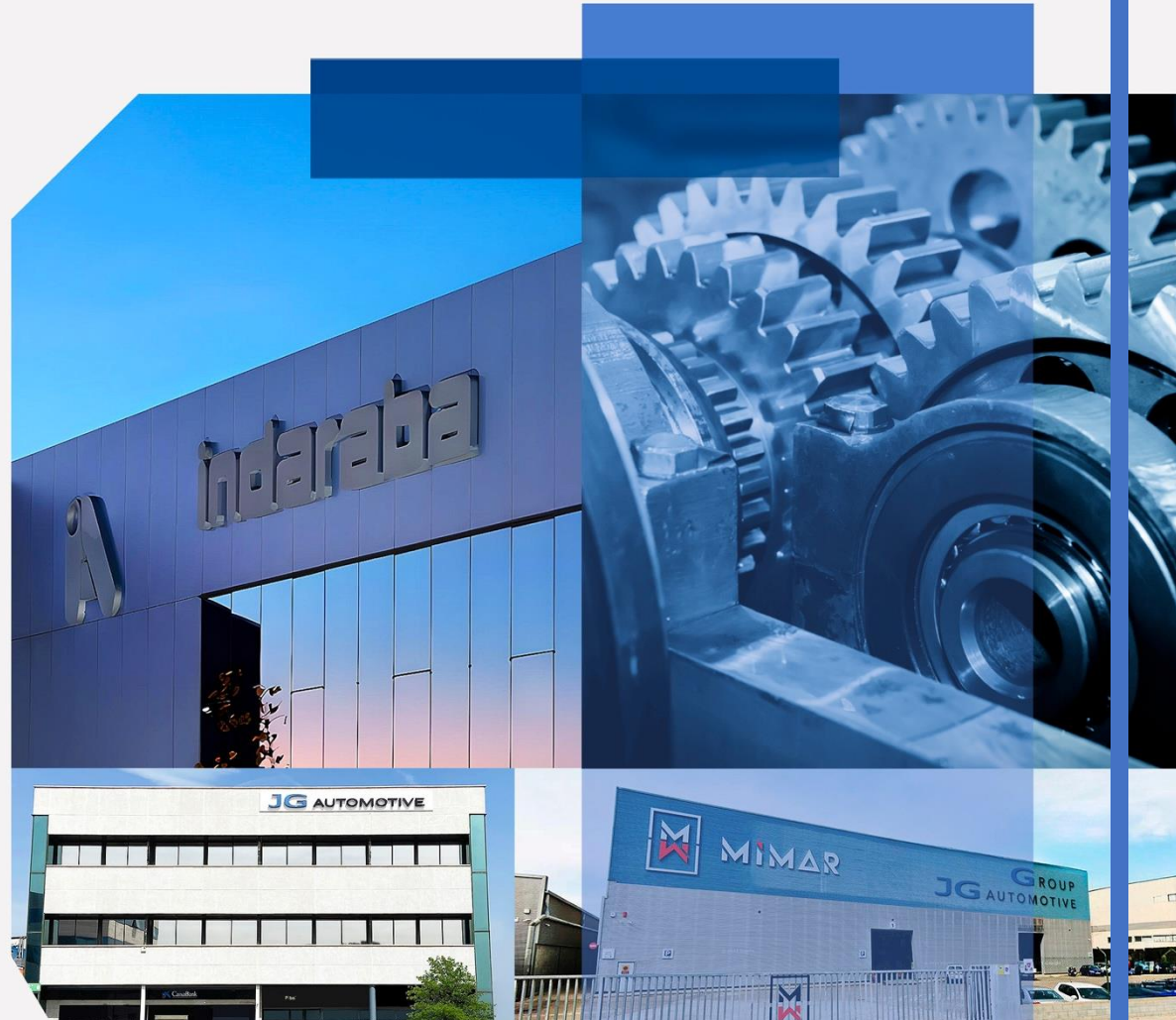




Corporate Dossier



Web:
indaraba.es

Phone:
(+34) 916 572 874
(+34) 945 280 368

Mail:
comercial@jgautomotive.com
indaraba@indaraba.es





CONTENTS

INICIO	4	MAQUINARIA	20
INDUSTRIAS ARABA	4	MEDIOS DE CONTROL	22
JG AUTOMOTIVE	6	RENISHAW EQUATOR™ 500	24
FÁBRICA DE MECANIZADO CNC	14	SISTEMA INFORMÁTICO DE GESTIÓN	26
INGENIERÍA	18	CERTIFICACIONES	28



ABOUT US

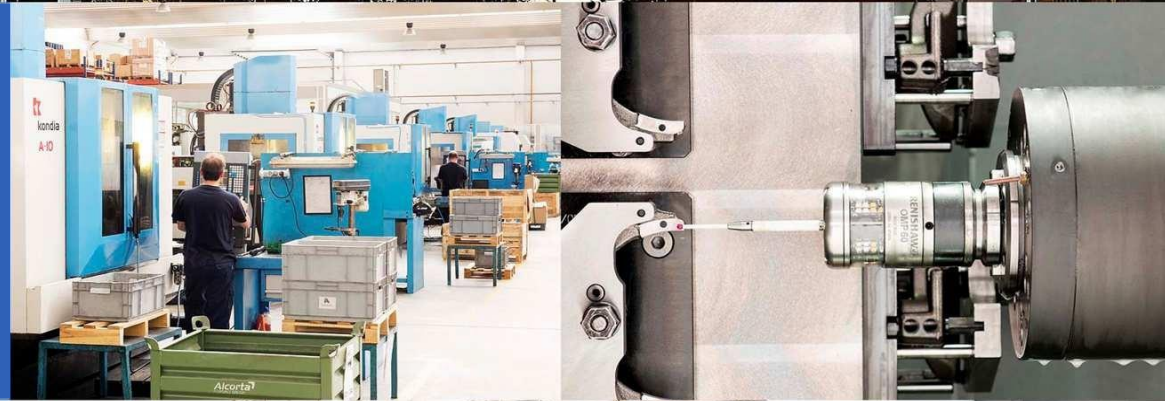
Industrias Araba (Indaraba), founded in 1977, is a leading company specializing in the manufacturing of highly complex and critical components through **CNC machining**. With more than 60 employees, Indaraba has established itself as a benchmark in the **automotive industry**, delivering high-precision, high-quality products in medium- and high-volume production runs. Its expertise in **CNC machining**, combined with a strong commitment to excellence and innovation, enables the company to serve highly demanding industries, ensuring customer satisfaction through **advanced and customized technical solutions**.

In May 2024, **Indaraba** joined the **JG Automotive Group**, strengthening its **operational capabilities** and expanding its technical expertise and market reach. This integration represents a major milestone, creating new opportunities for growth and technological advancement. Since its founding, Indaraba has maintained a firm commitment to quality, innovation, and customer satisfaction. Now, as part of JG Automotive, it will continue to pursue **excellence in every project**, reinforcing its position as a reliable and forward-looking supplier in the **CNC machining industry**.



At INDARABA we manufacture highly complex components through CNC machining, specializing in the automotive sector and serving demanding industries with medium- and high-volume production runs.

— INDARABA



JG AUTOMOTIVE

JG Automotive was founded in **1982**, specializing in the **manufacturing, development, and supply of metal and mechanical components** for the **automotive and industrial sectors**.

In **2002**, together with **18 international partners**, we founded **Global Alliance Automotive**, a group comprising **230 engineers working in collaboration**. The alliance includes manufacturers in **Brazil, Germany, China, India, Italy, Japan, South Korea, and the United States**, among others, managing a **combined turnover of €1.72 billion**.

JG Automotive is a benchmark supplier and manufacturer of **custom-designed metal components** for automotive and general industrial applications, using the **most advanced technologies** in **forging, casting, machining, stamping, screw machining, and sintering**. Thanks to our expertise in these production technologies, we have **diversified the industrial sectors we serve** and **optimized our operational processes**.

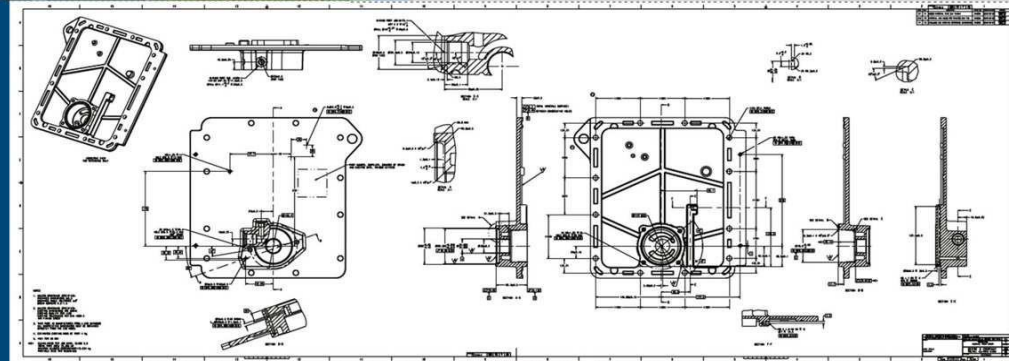




We are a leading manufacturer of custom metal components built to print, serving the automotive industry and general industrial sectors, utilizing the most advanced technologies available on the market.

— JG AUTOMOTIVE

JGA





JG AUTOMOTIVE

Your partner in metal solutions

customers

AUTOMOTION

DIRECT CUSTOMERS



- Baires (Buenos Aires)
- Gestamp Navarra
- Edscha Automotive GmbH Hengersberg
- Bielefeld Unformtechnik GmbH.
- Cerveira Lda.
- Esmar
- Global Tooling S.L
- Puebla Sa De Cv
- Vendas Novas Unipessoal



- Alcasting
- Goiaín
- Forjas Minas
- Gameko
- Mar Sk Ro
- Mecauto
- Vilanova
- Nova Recid
- Recitec
- Zdanice
- Egaña



- Kober
- SAS
- Paderborn



- Polska
- SaDeCv



- ITW Mikalor
- ITW Global Fastener España
- ITW Shakeproof
- ITW Rivex



- ZF Friedrichshafen AG
- ZF Hungaária KFT
- ZF Boutheaon S.A.S
- ZF do Brasil
- ZF Kama



- Altan Plastik
- Aptiv
- Irfan Plastik
- OcakKalip



- Pontedera



- JD Germany
- JD USA
- JD Spain

INDIRECT CUSTOMERS



- Adient | Alagon
- Adient | Calatorap



- Kayaba Suspensions Europe



- Sekurit Spain
- Sekurit Portugal





JG AUTOMOTIVE

Your partner in metal solutions

customers

AUTOMOTION

DIRECT CUSTOMERS

• **APTIV** •

 **OFFICINE VICA**




TRISTONE


DEUTZ

- Grupo Riza
- ABC Plásticos
- Promot Zakłady Metalowe
- Schmittergroup AG
- Thermolympic S.L.
- Vactron S.A
- Apinex
- Argus Fluidhandling LTD.
- Booster Precision Industrial
- BST Rods
- Cigüeñales Sanz
- Comercial de La Forja
- Dresser-Rand
- Industrias Ochoa
- Kendrion GmbH
- Industrias Cántabras Torneado (I.C.T.)

INDIRECT CUSTOMERS



- Cikautxo
- Edscha
- Freudenberg
- MMM Autoparts
- Montajes Abrera
- NSG Pilkington
- Pierburg





JG AUTOMOTIVE

Your partner in metal solutions

customers

INDUSTRY

DIRECT CUSTOMERS

- AMPO
- Axolia Luxembourg
- CAF Signalling
- Diametal SAS France S.A.S.
- Expal
- Electrowatt France
- Grupo Klam
- Grupo Betico
- Hitachi
- Grupo Defontaine
- Hellstens Mecaniska AB
- Comexi
- Flex
- Rotrans
- MRO Defence S.L.
- Mondragon Group
- Ros Roca
- Rexnord Flaptop Europe
- Sedecal
- Thielmann Spain
- TSK Flagsol GmbH
- United Tech. (UTC)
- Wistra GmbH
- Vilisto GmbH
- Roquet
- Zitron S.A.
- Multi-Wing
- Araven

AGRICULTURE

DIRECT CUSTOMERS

- Bellota
- CBM S.p.A.
- Osmag
- Capilla
- Sistemas Horticolas Almeria
- Tenias
- Agrimac

INDIRECT CUSTOMERS

- Columbia Gear Corporation

ELEVATION

DIRECT CUSTOMERS

- HIAB
 - HIAB Finland Oy
 - HIAB Poland SP.Z.O.O
 - HIAB Sweden AB
 - HIAB Shanghai
 - DEL Equipment Ltd
 - HIAB Cranes S.L.
 - Waltco Lift Corporation
- Cemvisa Vicinay
- MP Componentes
- Stacke
- Wittur
- Zardoya Otis

WIND ENERGY

DIRECT CUSTOMERS

- Hine
- Vestas®
- Siemens Gamesa
- Glual

NAVAL

DIRECT CUSTOMERS

RAILWAY

DIRECT CUSTOMERS

- Stadler Valencia
- Vossloh España
- Barat Group
- Alstom
- CAF
- Refis

BUSES

DIRECT CUSTOMERS

- Hispacold
- Irizar
- Leciñena

MOTORCYCLES

DIRECT CUSTOMERS

- Gas Gas
- Sherco
- Rieju
- Torrot

HIGH-PRESSURE CYLINDERS

INDIRECT CUSTOMERS

- Drager Medical Hispania
- Linde Group
- Marioff Hi-Fog
- Praxair



JG AUTOMOTIVE

Your partner in metal solutions




internacional presence



HEADQUARTERS

 Madrid

MANUFACTURING PLANTS

-  Barcelone
-  Vitoria-Gasteiz
-  Zaragoza

OFFICES

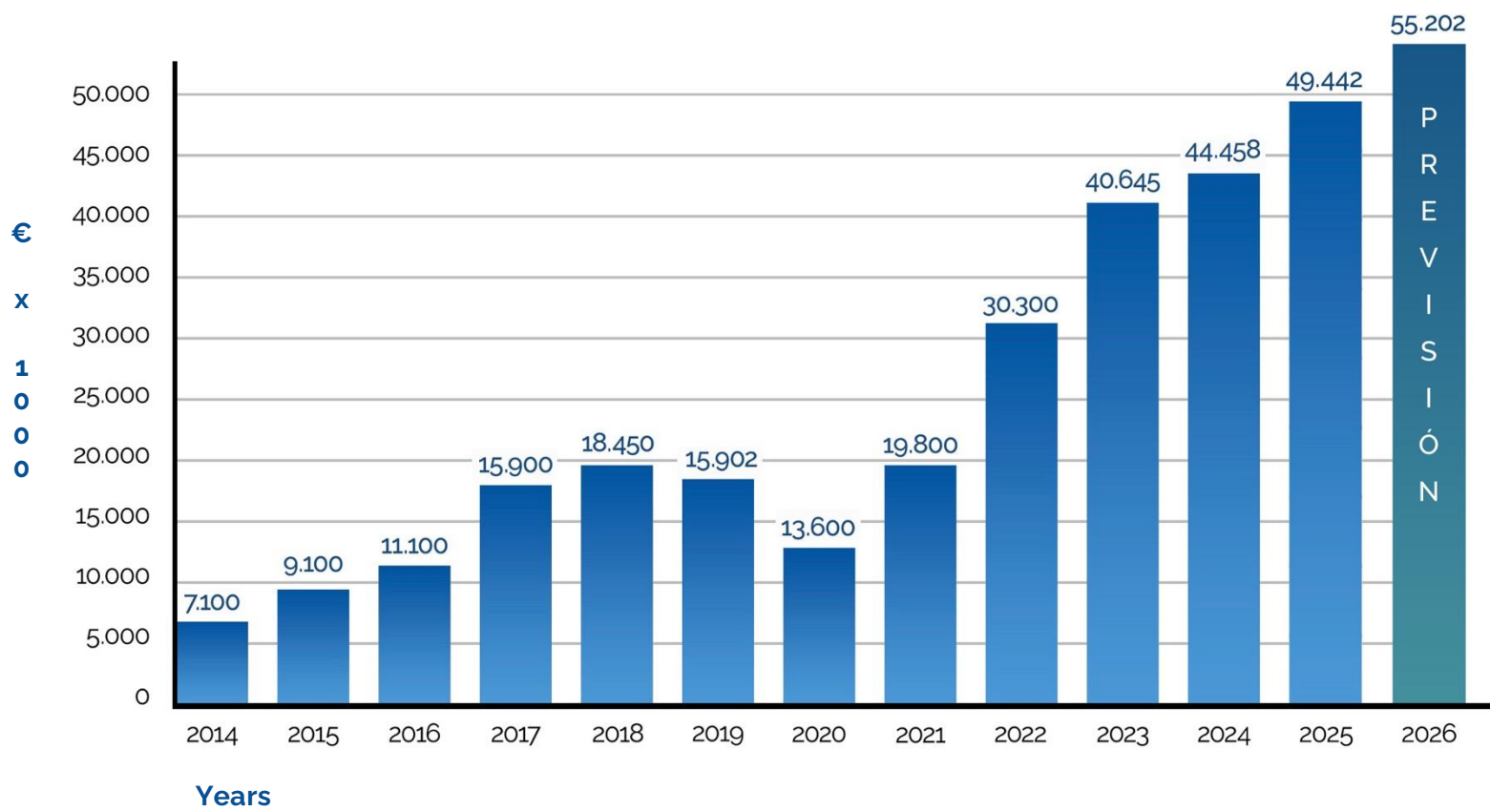
- | | |
|--|---|
|  Istanbul |  Ningbo |
|  Delhi |  Torino |
|  Chennai |  Barcelone |
|  Chongquing |  Lyon |



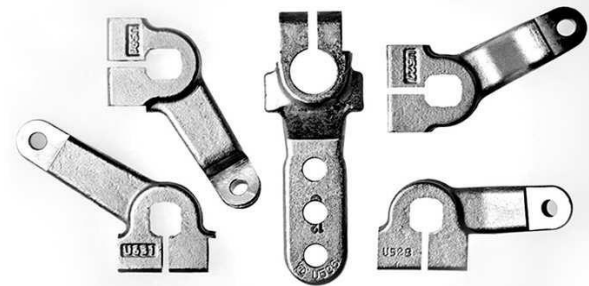
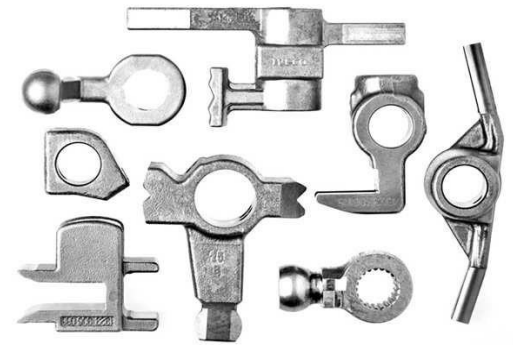
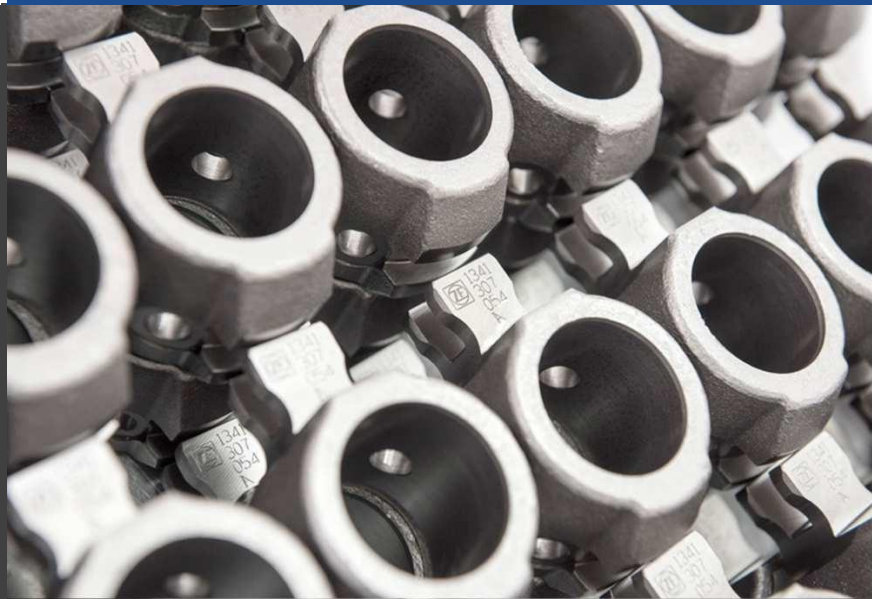
JG AUTOMOTIVE

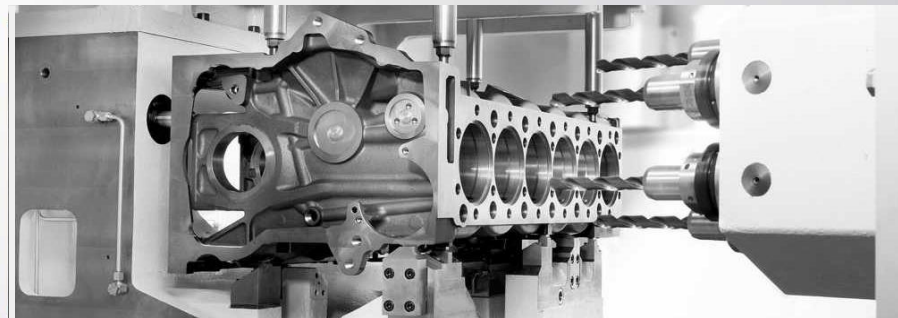
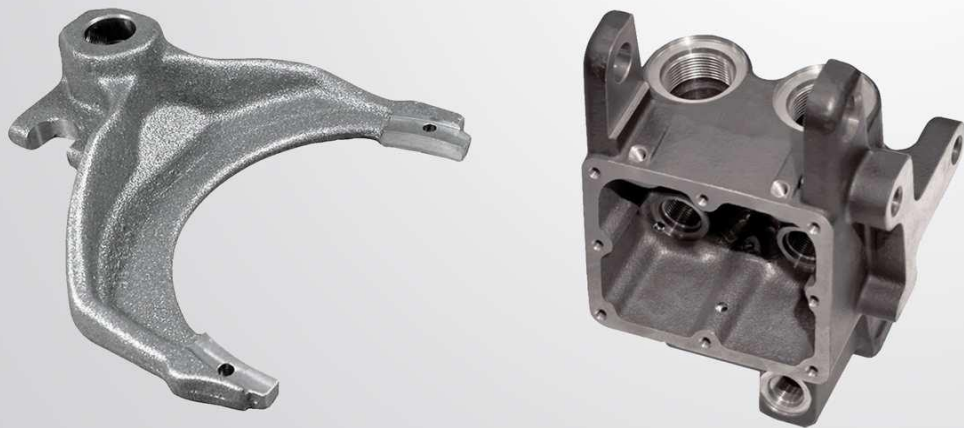
Your partner in metal solutions

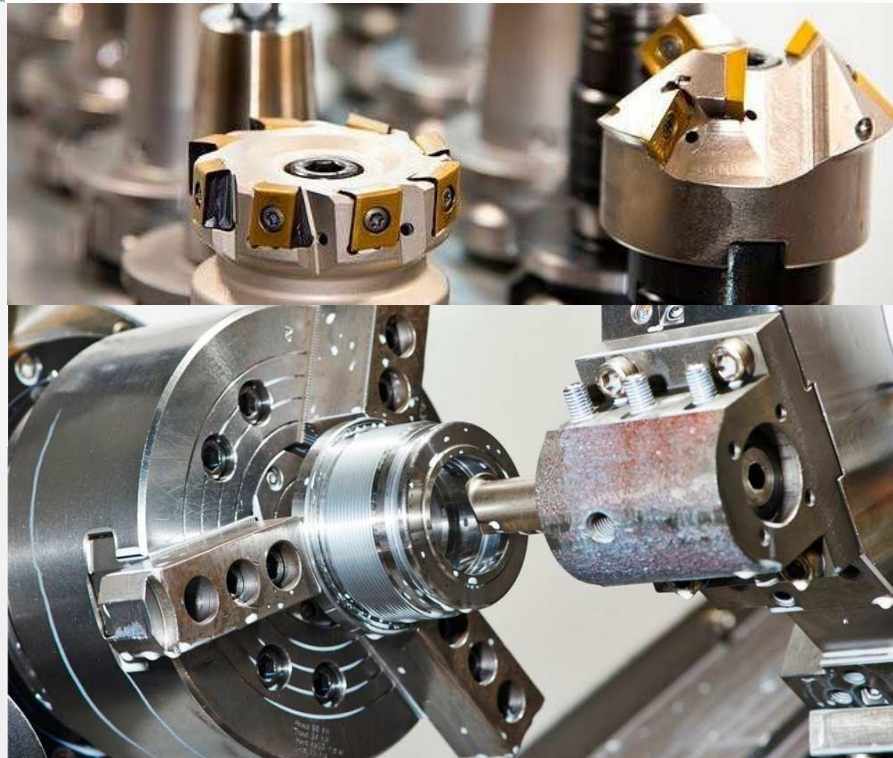
sales

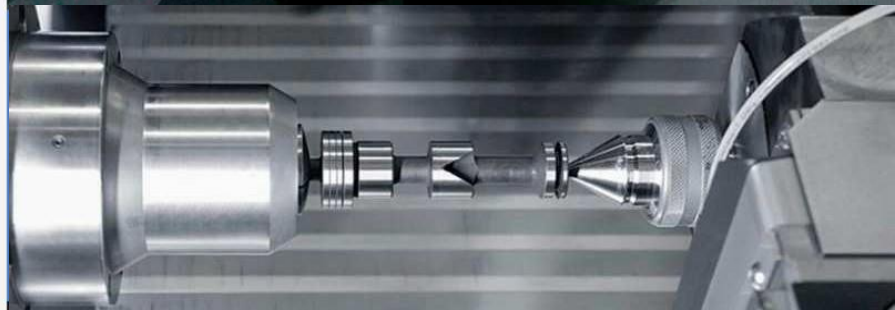


- JG AUTOMOTIVE
Your partner in metal solutions
- JG PROMEC MACHINING
JG AUTOMOTIVE GROUP
- indaraba
- MIMAR
- JG BENDING STAMPING
JG AUTOMOTIVE GROUP









ENGINEERING

En **Indaraba**, we help our customers achieve the **optimal manufacturing of their components**.

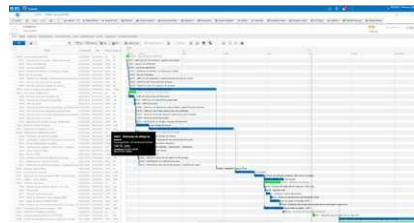
Component Design and Modeling

- Product Co-Design
- Process improvement
- Cost reduction
- 3D and 2D CAD:
 - IGES, PRT, DWG, and DXF.



Manufacturing Planning

- Selection of raw materials and heat or surface treatments.
- MRP – Material Requirements Planning.
- Operations workflow design.
- Resource optimization.



Tooling Design and Development

- Tooling design.
- 3D clamping simulation.
- Tooling manufacturing.
- Comprehensive maintenance.



ENGINEERING

Production and Quality Control

- Real-time shop floor data collection.
- Document management.
- Online warehouse management.
- Integrated traceability.
- Statistical Process Control (SPC).
- Integrated ERP system.
- Integrated customer portals.



Tool Design and Modeling

- R&D of specialized cutting tools.
- Manufacturing, maintenance, and re-sharpening of custom cutting tools.





MACHINERY

At **Indaraba**, we operate state-of-the-art machinery within modern, fully equipped facilities.

Our Machinery

- 8 Mori Seiki horizontal machining centers, 500 mm pallet.
- CNC milling machines.
- Precision surface grinding machine.
- 2 vertical broaching machines.
- 4 SUNNEN internal honing machines, capacity from 1.5 to 165 mm internal Ø.
- Drill presses.
- Cut-off saw.
- Automatic cycle tapping machine.
- 12 4-axis vertical CNC machining centers, table capacity up to 1000 mm.
- STUDER profile grinding machine.

Our Products

- **Weight:** Up to 25 kg
- **Dimensions:** Up to 500 x 500 x 750 mm
- **Production volume:** 2,500,000 parts manufactured per year.





We have advanced equipment and machinery that enable us to provide a comprehensive service across a wide range of CNC machining techniques within the industry.

— INDARABA



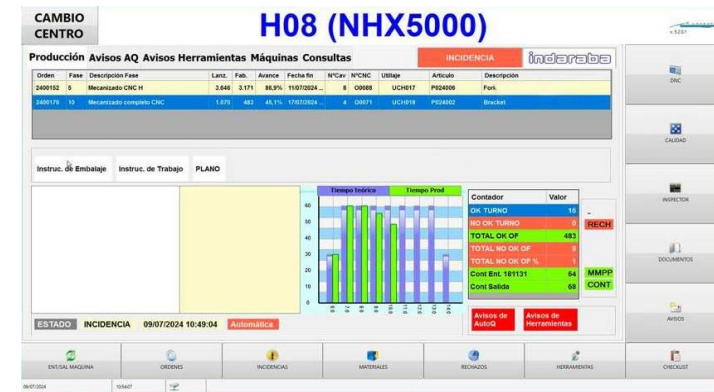
INSPECTION EQUIPMENT

The **Indaraba** metrology laboratory is equipped with **state-of-the-art inspection systems** to verify the quality of manufactured products, including:

- 3D Coordinate Measuring Machine (CMM) with indexable CNC head and integrated SPC software
- Profile projector up to 100x magnification
- Hardness testers, gauge blocks, bore gauges, and conventional inspection equipment
- Mitutoyo Contracer CV-2000 contourgraph

Design and manufacturing of custom inspection fixtures





RENISHAW EQUATOR™ 500

The **Equator™ 500 system**, with its larger capacity, allows the measurement of bigger components on a **500 mm diameter surface** and up to **400 mm in height**.

Both **Equator systems (300 and 500)** maintain high accuracy within a temperature range of 5°C to 50°C, automatically compensating for environmental changes, and can measure at speeds exceeding 200 mm/s.

All systems are compatible with the intuitive **Organiser operator software**, the **EZ-IO automation program**, and **IPC (Intelligent Process Control) software**, enabling automatic tool offset updates directly on **CNC machines**.

GREATER MEASUREMENT VOLUME

When used with the **SM25-2 scanning module**, the **Equator™ 500 system** provides a measuring volume of **500 mm in the X/Y plane and 250 mm in Z**, expandable up to **400 mm in Z** with the **SM25-3 module**.

The system supports up to **100 kg** (including workpieces and fixtures). Its applications include the manufacturing of **engine components, transmissions, suspension systems, stamped parts, valves, and pumps for cars and trucks**.



RENISHAW EQUATOR™ 500

Accuracy under rapid temperature changes, now with a range exceeding 45°C

Climate conditions can cause daily and seasonal temperature variations in a workshop. The **Equator system** overcomes these changes through its **re-mastering process**, allowing measurement to begin immediately after the first part is produced and to continue regardless of temperature fluctuations.

Automatic tool offset updates directly on Equator 300 and 500 systems

The **Equator range** is compatible with **IPC software**, enabling automatic control and adjustment of machining operations to keep part dimensions within tolerance limits. This improves manufacturing quality and reduces part rejection rates.

Located close to the CNC machines, the **Equator system** adjusts the process directly at the point of manufacture, eliminating delays associated with end-of-line inspection. A single **Equator system** can be connected to one or multiple CNC machine tool controls.

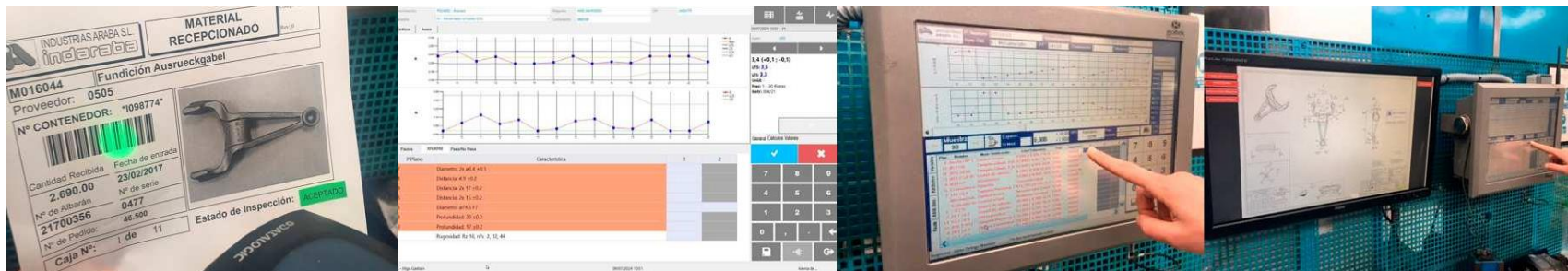




INTEGRATED MANAGEMENT INFORMATION SYSTEM

The comprehensive **quality management software**, fully integrated with the **ERP system** and the **shop floor data collection system**, provides real-time information on required inspection operations, as well as the recording of self-inspection data and **SPC capability studies**.

All product quality-related information is also managed and planned within the system, including full development of the **APQP process**, as well as the management of non-conformities, documentation, calibration, and PPAP sample reports, always in compliance with the requirements of the **IATF 16949 standard**.





CERTIFICATIONS

To ensure a company management system focused on quality, **Indaraba** has obtained and implements the certifications appropriate to its activity, always striving to maintain continuous improvement in both product and process.

IATF 16949:2016



VDA 6.3



ISO 14001:2015





CORPORATE POLICIES

The **JG Automotive Group** ensures accurate and up-to-date documentation at every stage of development and production, guaranteeing seamless communication and the highest quality standards.



Socially Responsible Investing



Responsible Minerals Policy



Corporate Social Responsibility (CSR)





INDARABA.ES

in /in/jgautomotive

in /in/indaraba/

JG AUTOMOTIVE
Your partner in metal solutions

Av. de la Industria, 32D
28108, Alcobendas
Madrid

 **indaraba**

C. Uzbina, 1 (Polígono Industrial Júndiz)
01015, Vitoria-Gasteiz
Álava

+34 91 657 28 74
(+34) 945 280 368

comercial@jgautomotive.com
indaraba@indaraba.es

JG ^{GROUP} AUTOMOTIVE
Your partner in metal solutions



JG PROMEC MACHINING
JG AUTOMOTIVE GROUP



JG ³ BENDING
STAMPING
JG AUTOMOTIVE GROUP