



MIMAR

CORPORATE DOSSIER

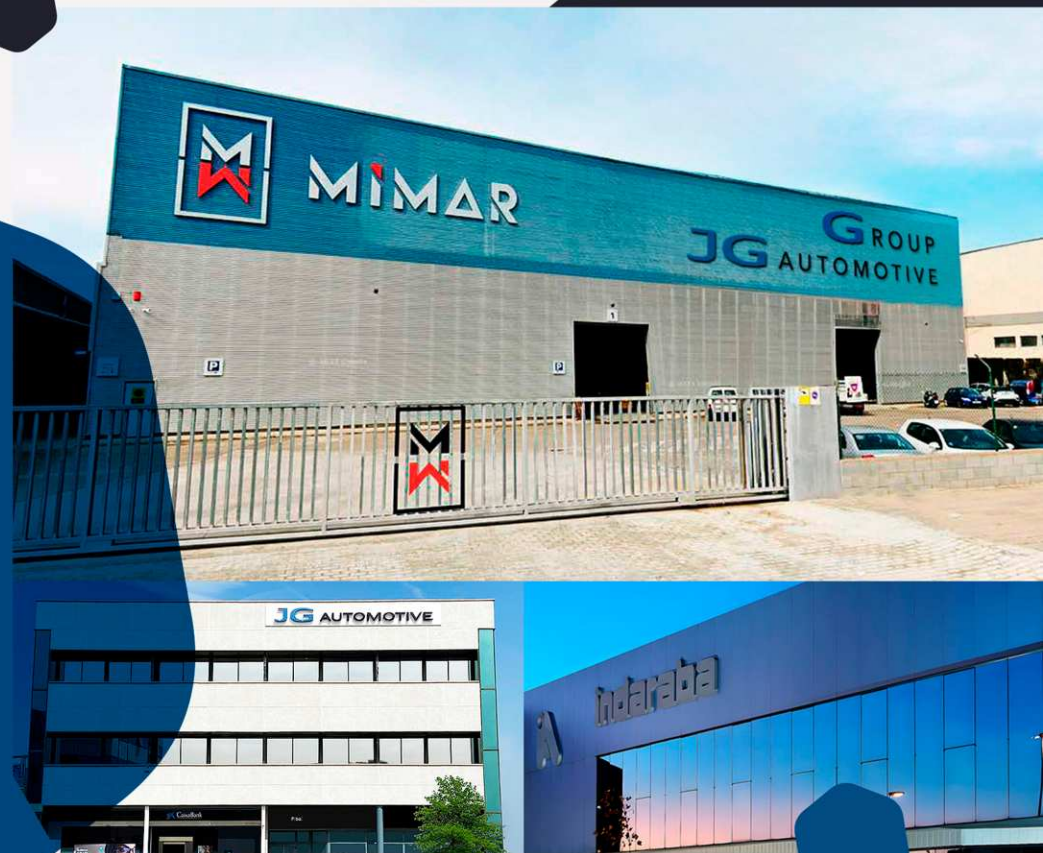
Phone:

(+34) 933 883 230

Mail:

comercial@jgautomotive.com

www.lasermimar.com





MIMAR

JG AUTOMOTIVE
Your partner in metal solutions



INDEX

ABOUT US ▼	4	PRODUCTS ▼	36
LASER MIMAR	4	MACHINED PRODUCTS	38
JG AUTOMOTIVE	6	MACHINE BENCH	40
PRODUCTIVE AREAS ▼	18	WELDED ASSEMBLIES	42
INDUSTRIAL MACHINING	18	FRAMES	44
LASER CUT	20	ASSEMBLIES	46
METAL SHEET BENDING	22	FILTERS AND VALVES	48
ASSEMBLY AND CONSTRUCTION	24	HIGH PRESSURE CYLINDERS	50
WELDING	26	LOW PRESSURE CYLINDERS	52
COLD WELDING ADHESIVE	28	TRAIN WAGON WALLS	54
PAINT AND FINISH TREATMENTS	30	FACTORY CERTIFICATIONS	58
MACHINERY	32	CONTACT	59



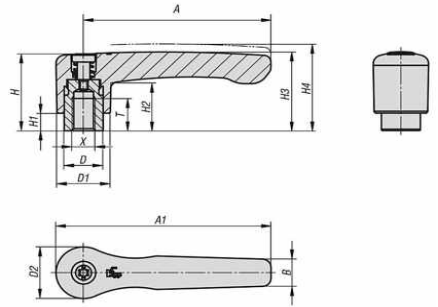
LASER MIMAR

LASER MIMAR is a company focused in manufacturing and production of metal components, frames, cylinders and sheet metal constructions. To grant our success we have cutting edge technologies, most advanced equipment and everything, managed by a highly skilled professional team.

Founded in 1999, **LASER MIMAR** started its activity in Parets del Vallés (Barcelona) as a metal **assemblies manufacturer**, working metal sheet, making high and low pressure cylinders or boilers. To be able to manufacture this products, we have capabilities for cutting, bending, drilling, machining, welding, riveting, adhesive, construction and paint.

Nowadays we develop our activities through our functional areas fully controlled in our layout, integrating all activities necessary to fulfill a high quality manufacture.

In 2021 **JG Automotive** acquires **LASER MIMAR** factory, becoming part of **JG Automotive Group**.



We apply all innovations available to the transformation of metal through our engineering team.

— LASER MIMAR





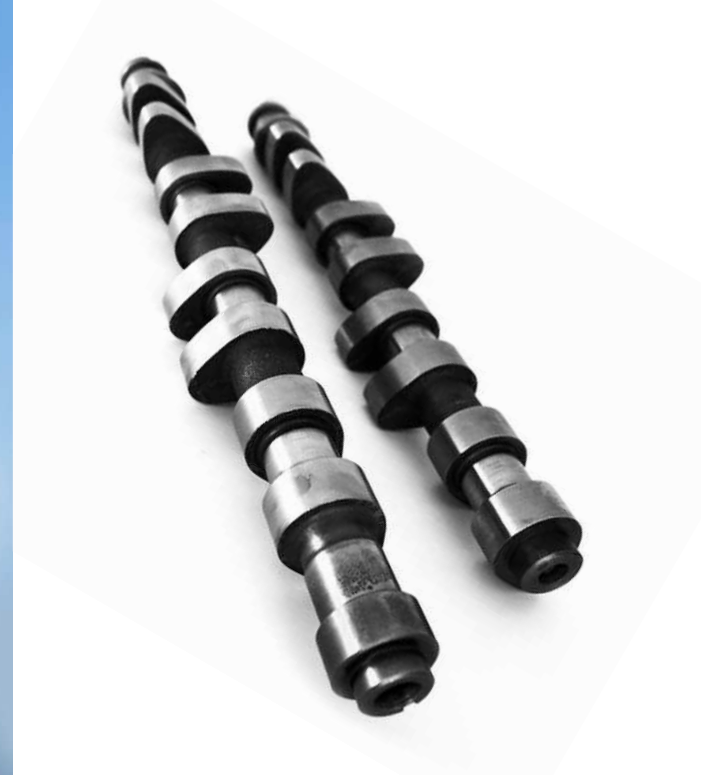
JG AUTOMOTIVE

Founded in 1982, **JG Automotive** main activity is the development, manufacturing and supply of metal components and parts for automotive industry and general industry.

In 2002 we founded with another 18 partners **Global Alliance Automotive**. This big group has **230 engineers** that cooperate with manufacturers in Brazil, Germany, China, India, Italy, South Korea, USA and some other countries, handling a total yearly turnover of **1,720 M€**.

JG Automotive is a reference as supplier of **metallic components** produced under customer design and specifications. We manage the most advanced **technologies** for production: hot and cold forging, investment casting, aluminum casting, machining, sintering, MIM, stamping, fine blanking, wire forming, etc. Thanks to our extensive knowledge of all this productive technologies, we have a big variety the industrial sectors where we can reach a big variety of industrial sectors where we can work with **optimal results in terms of quality and cost**.

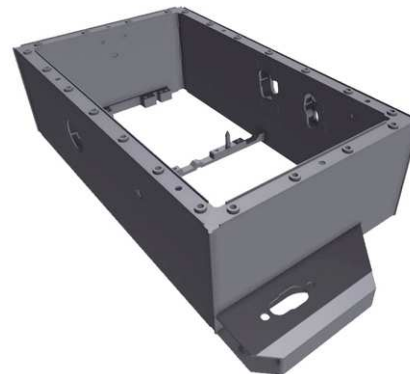
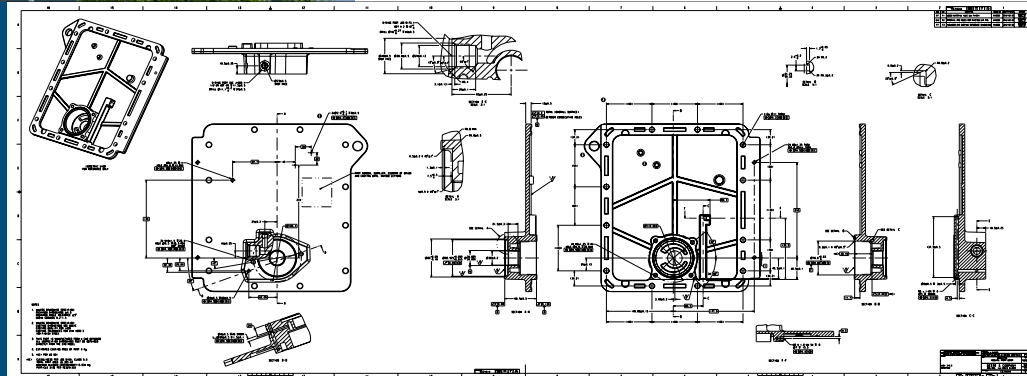




We are a reference in market as manufacturers and suppliers of metallic components designed under our customers specifications, for automotive components or general industry applications, though the use of the most advanced manufacturing technologies and techniques.

— JG AUTOMOTIVE

JGA



JG AUTOMOTIVE

Your partner in metal solutions
our history



FURTHER INTERNATIONALIZATION

JG Automotive opens two new offices located in China.

07 STRATEGY

NEW OPENINGS

JG Automotive inaugurates new offices in Chennai and Delhi (India)

09 FACTORY

GROWTH OF THE JG GROUP

JG Automotive has acquired INDARABA, a company specialized in CNC machining, strengthening its position in the sector and expanding its production capacity and precision services.





AUTOMOTIVE INDUSTRY

DIRECTCUSTOMERS



- Baires (Buenos Aires)
- Bielefeld Unformtechnik GmbH.
- Cerveira Lda.
- Esmar
- Global Tooling S.L.
- Navarra
- Palau
- Palencia
- Puebla Sa De Cv
- Vendas Novas Unipessoal



- Goiain
- Forjas Minas
- Gameko
- Mar Sk Ro
- Mecauto
- Nova Recid
- Recitec
- Zdanice
- Egaña



QUALITY FOR LIFE

- Kober
- SAS
- Austria
- Paderborn



- Polska
- Sa De Cv



- ITW Mikalor
- ITW Global Fastener España
- ITW Shakeproof
- ITW Rivex



- ZF Friedrichshafen AG
- ZF Hungária KFT
- ZF Bouthéon S. A. S
- ZF do Brasil
- ZF Kama



- Altan Plastik
- Aptiv
- Irfan Plastik
- Ocak Kalip



- Pontedera



JOHN DEERE

- JD Germany
- JD USA
- JD Spain

INDIRECTCUSTOMERS



- Adient | Alagon
- Adient | Calatorap



- Kayaba Suspensiones Europe



- Sekurit España
- Sekurit Portugal





AUTOMOTIVE INDUSTRY

DIRECTCUSTOMERS



- Metalsmelting
- Microplásticos
- Plásticos ABC
- Promot Zakłady Metalowe
- Schmittergroup AG
- Thermolympic S.L.
- Vactron S.A
- Alcorta Forging Group
- Apinex
- Argus Fluidhandling LTD.
- Booster Precision Industrial
- Beon Automotive
- BST Rods
- Cigüeñales Sanz
- Comercial de La Forja
- Denso Group
- Dresser-Rand
- Grupo Riza
- Industrias Ochoa
- Kendrion GmbH
- AUSA

JG AUTOMOTIVE

Your partner in metal solutions
clients

INDIRECTCUSTOMERS

- Cikautxo
- Edscha
- Freudenberg
- MMM Autoparts
- Montajes Abrera
- NSG Pilkington
- Pierburg



MANUFACTURING INDUSTRY

DIRECTCUSTOMERS

- AMPO
- Axolia Luxembourg
- Covalma
- Comexi
- CAF Signalling
- Diametal SAS France
- Expal
- Electrowatt France
- Grupo Klam
- Grupo Betico
- Hitachi energy
- Grupo Defontaine
- Hellstens Mecaniska AB
- MRO Defence S.L.
- Mondragon Group
- Ros Roca
- Rexnord Flaptop Europe
- Sedecal
- Thielmann Spain
- TSK Flagsol GmbH
- United Tech. (UTC)
- Wistra GmbH
- Vilisto GmbH
- Roquet
- Zitron S.A.
- Hitachi

AGRICULTURAL

DIRECTCUSTOMERS

- Bellota
- CBM S.p.A.
- Sistemas Horticolas Almeria
- Osmaq
- Capilla
- Tenias
- Agrimac

INDIRECTCUSTOMERS

- Columbia Gear Corporation

WIND ENERGY

DIRECTCUSTOMERS

- Hine
- Siemens Gamesa
- Glual
- Vestas®

NAVAL

DIRECTCUSTOMERS

- Navantia
- Guascor Energy
- MG Sanders
- Irongrip

ELEVATION

DIRECTCUSTOMERS

- HIAB
 - HIAB Finland Oy
 - HIAB Poland SP.Z.O.O
 - HIAB Sweden AB
 - HIAB Shanghai
 - DEL Equipment Ltd
 - HIAB Cranes S.L.
 - Waltco Lift Corporation
- Cemvisa Vicinay
- MP Componentes
- Stacke
- Wittur
- Zardoya Otis

HIGH PRESSURE CYLINDERS

DIRECTCUSTOMERS

- Drager Medical Hispania
- Linde Group
- Marioff Hi-Fog
- Praxair

RAILWAY

DIRECTCUSTOMERS

- Alstom
- CAF
- Refis
- Stadler-Vossloh
- BARAT Group

BUSES

DIRECTCUSTOMERS

- Hispacold
- Irizar
- Leciñena

MOTORBIKES

DIRECTCUSTOMERS

- Gas Gas
- Sherco
- Rieju
- Torrot
- Piaggio Group



JG AUTOMOTIVE

Your partner in metal solutions

présence internationale



HEADQUARTER

 Madrid

FACTORIES

 Barcelona

 Vizcaya

OFFICES

 Estambul

 Delhi

 Chennai

 Chongqing

 Ningbo

 Torino

 Barcelona

 Lyon

In June of 2002, **JG Automotive** became one of the founding members of the **Global Alliance**, the biggest global supply chain joint venture that provides engineering and business development services.

GLOBAL ALLIANCE AUTOMOTIVE

- Operates in the biggest markets of the automotive industry.
- 19 independent offices.
- Active in 15 countries located in America, Europe, and Asia.
- 1.720M € in turnover.



ALCANCE GLOBAL ALLIANCE

- Full-service supplier.
- An international network of suppliers dedicated to engineering and business development.
- Direct access to 230 engineers and qualified specialists.
- Constantly updated knowledge of the market developments, requirements, trends, and norms thanks to the presence in several countries.
- Great relationship and smooth collaboration with the factories.

JG AUTOMOTIVE

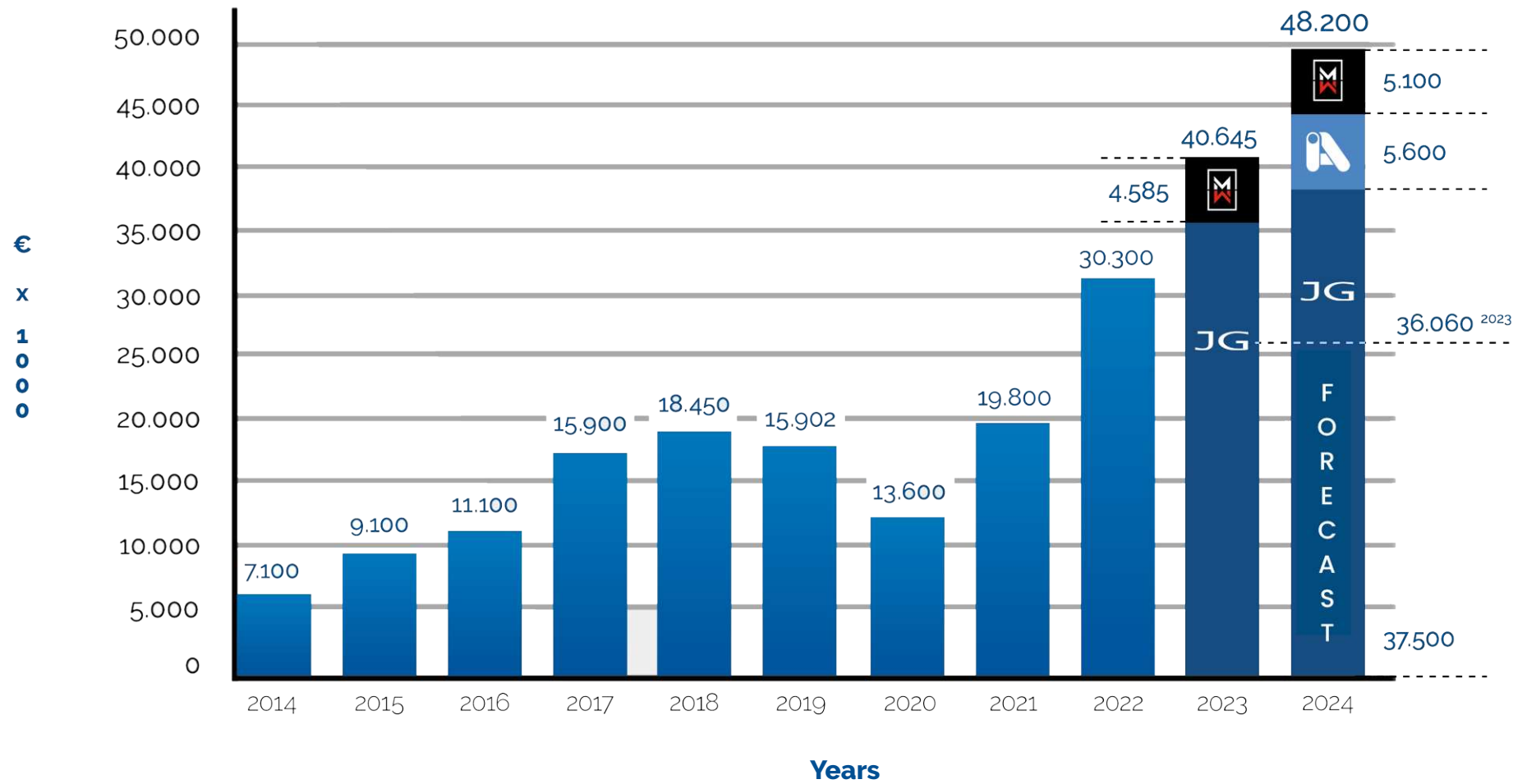
Your partner in metal solutions
alliances



JG AUTOMOTIVE

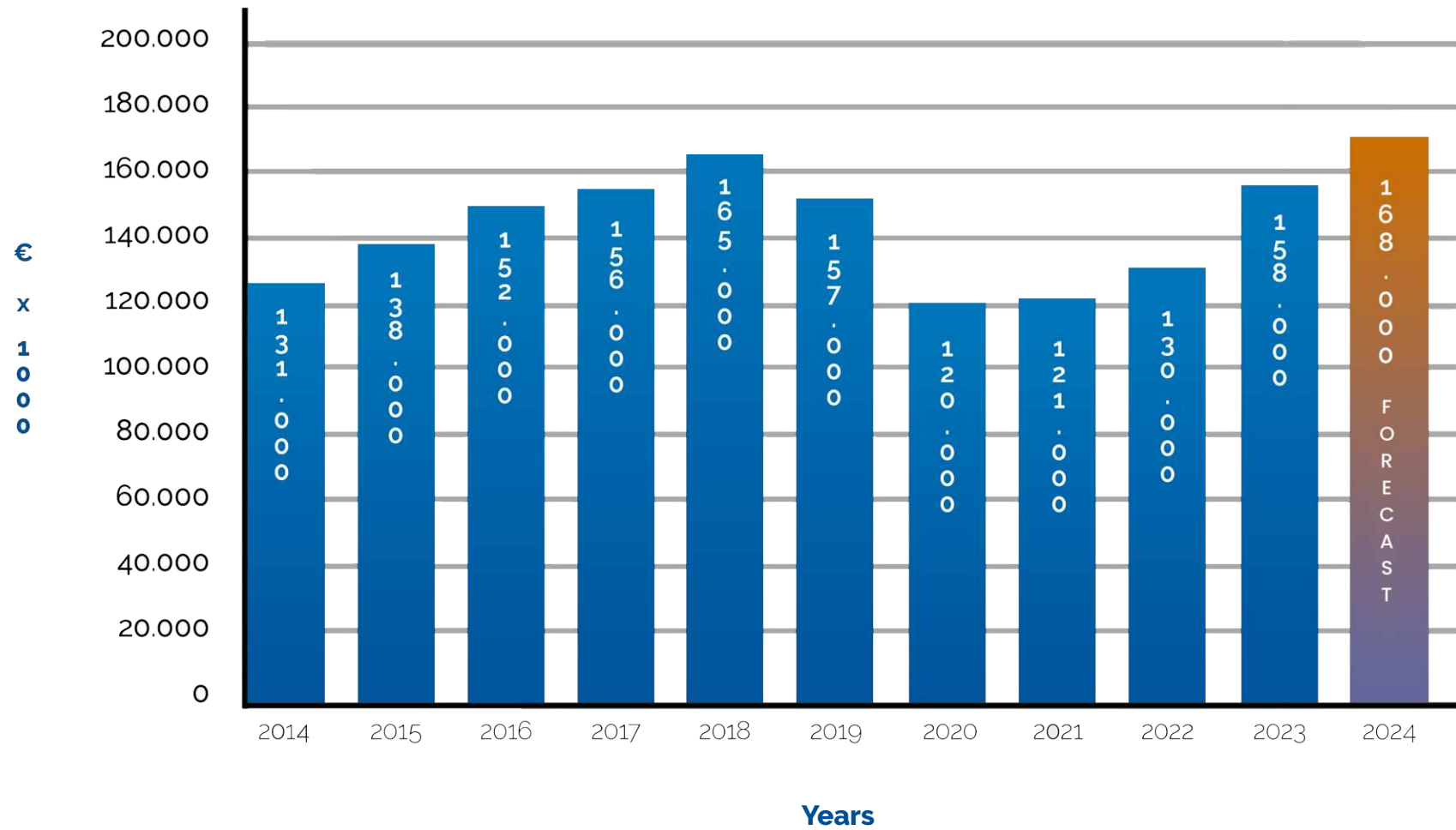
Your partner in metal solutions

sales



JG AUTOMOTIVE

Your partner in metal solutions
principal sales





INDUSTRIAL MACHINING

In **LASER MIMAR** we have several machining centers, including a 5axis Haas center. This machining capabilities allow us to be independent from other suppliers, managing the full process within our company, making big difference ensuring quality and lead times.

Having our own **machining centers** give us big flexibility and agility to deliver our productions.

As manufacturer with more than **150 customers**, our installed capacity allow us to produce almost any kind of component, being also possible to produce prototypes. This ensures the possibility of satisfying customer most exigent demand.

We are the manufacturer that any customer can require, in terms of quality, delivery and price, from the **prototypes to the mass production**.

In **LASER MIMAR** we are your partner for the production of tailor-made parts and assemblies. We assume the responsibility of delivery components in time with the maximum quality level.



More information:
lasermimar.com/mecanizado-industrial/



We have equipment and machinery that allows us to provide a full service, including machining capabilities.

— LASER MIMAR



LASER CUT

We provide a full service to companies and professionals with the most **advanced technologies to make your project a success**. Our wide stock of first class materials and our installed capacity allows us to offer finished products always in time.

Automated systems guarantees that cutting from one to thousands of parts with short lead times, always with big accuracy.

MIMAR ensures **industrial solutions** for any productive sector, including from small parts for automotive or general industry to big developments for **construction or infrastructure or renewable energies**.

Materials:

- > Carbon steel
- > Galvanized steel
- > Inox steel
- > Aluminum
- > Copper alloys

Finishes:

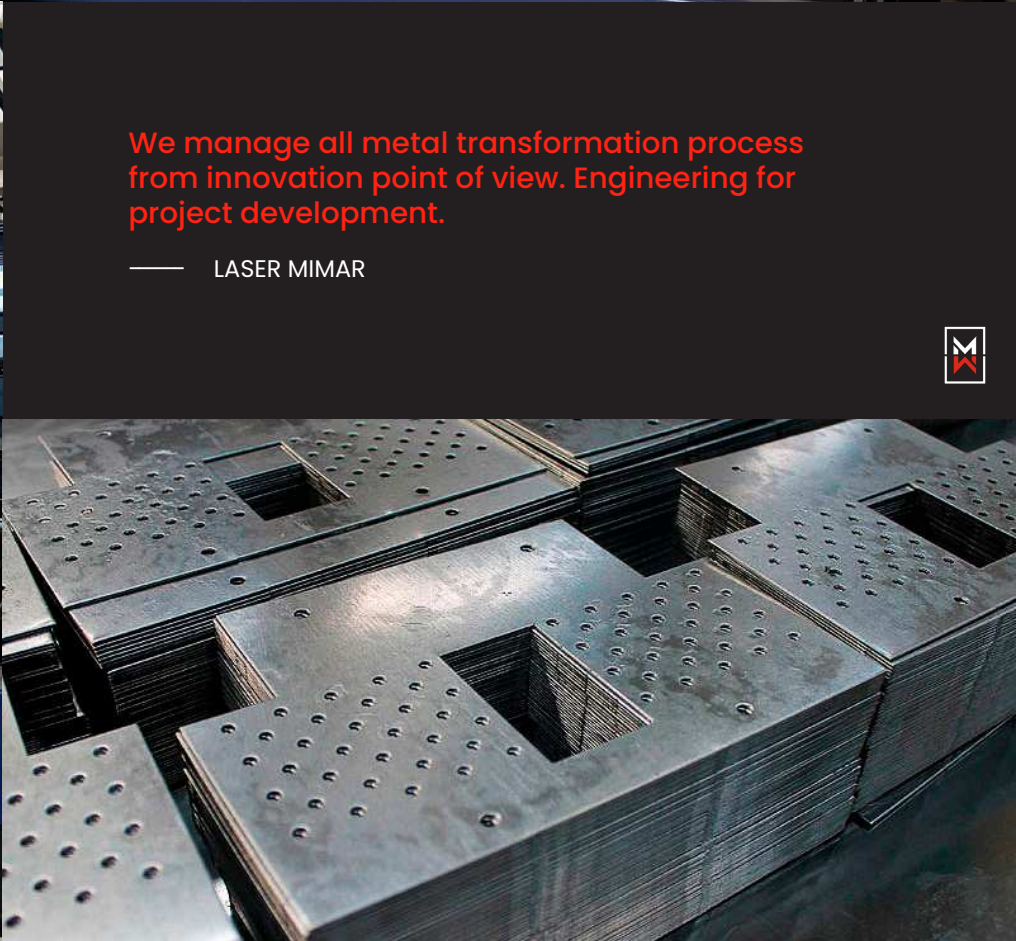
- > Natural
- > Vibrated
- > Polished
- > Brushed
- > Premium shiny with protective sheet

Thickness:

- > 0,5 mm to 25 mmx.
- > Carbon - Inox - Aluminum



More information:
lasermimar.com/corte-laser/



We manage all metal transformation process from innovation point of view. Engineering for project development.

— LASER MIMAR





METAL SHEET BENDING

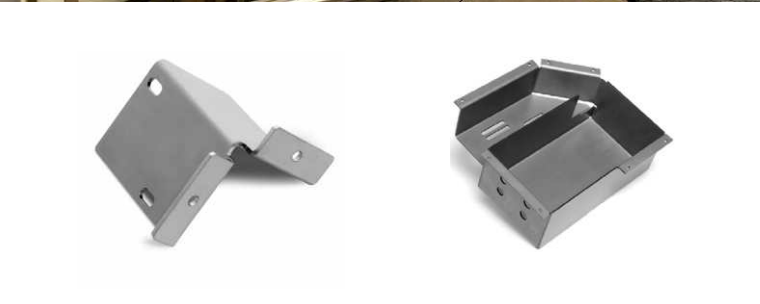
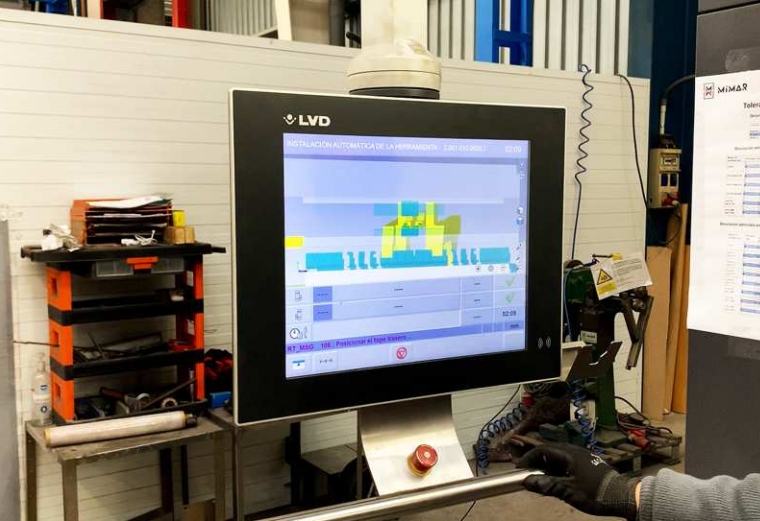
In **LASER MIMAR** we have automated sheet bending machines with **cutting edge technology**. Machinery is programmed from engineering office, so production follows an automated bending sequence that ensures optimal performance. Dimensional accuracy is maximized, assuring that production achieves the design requirements, with a stable process that is **optimized in time and cost**. This production step has big relevance in final assemblies quality level, so we take advanced quality plans to ensure.

Our **CNC programmed machinery** with automated bending tools storage, allows the machine to make automated selection in the bending process of every tool, quickly and with confidence. This automation ensures dimensional stability in process, in addition to our **automated laser cut capabilities**, providing a full service equipment to make complex assemblies with full guarantees of success.

Our team has the **capabilities and experience in metal industry** needed to face any metal construction with full confidence, assuring quality in manufacturing.

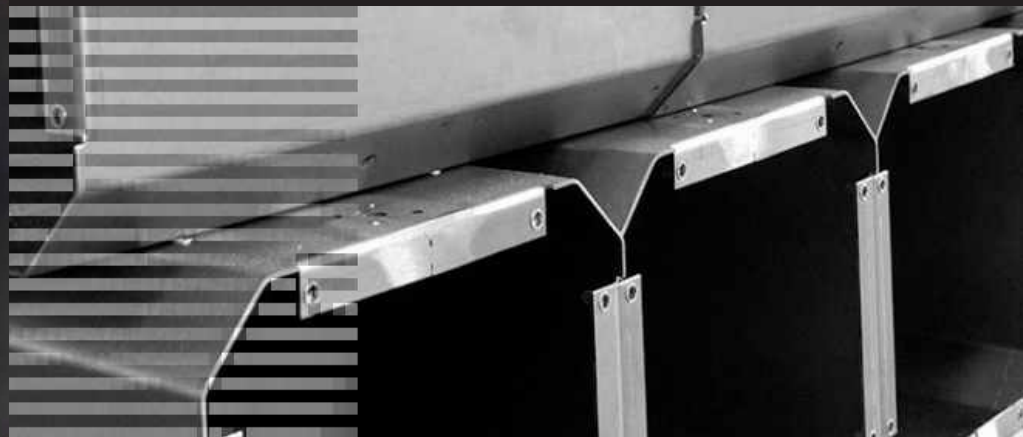


More information:
lasermimar.com/plegado/



We bend with full accuracy your metal components, it doesn't matter if are simple or complex parts.

— LASER MIMAR





ASSEMBLY AND CONSTRUCTION

In **LASER MIMAR** we don't only produce single elements. We are **specialist in complex assemblies that can include mechanical components for specific functions**. We can include in your projects electric motors, actuators or other electronic devices that makes the metallic construction a fully functional machine

We make in house the **engineering design for the production and manufacturing of your assembly**, making it complex machines with specific applications. Is not always needed that customer provides us with designs, we have our own capabilities to elaborate designs to satisfy customer demands and necessities, making project from zero, reaching a final solution with a full project elaboration. In addition, we count with **JG Automotive engineering** team to give us full support when is needed.

Our **engineering capabilities**, added to our manufacturing installed capacity for metal cut, machine, weld, bend and assembly, makes us a perfect partner for our customers to be able to receive **turnkey solutions**.

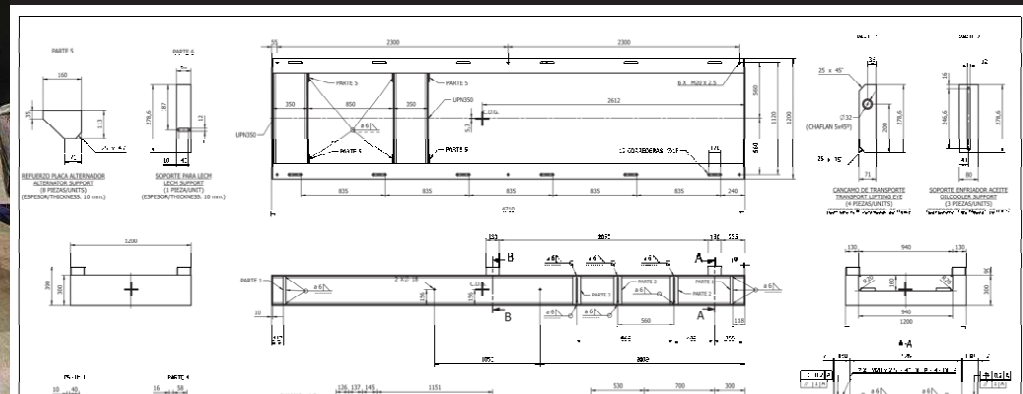


More information:
lasermimar.com/montaje/



In LASER MIMAR we offer the best personalized product in metallic assemblies with a full service, ensuring quality and cost.

— LASER MIMAR





WELDING

In **LASER MIMAR** has a highly skilled personal that capabilities us to face any fabrication, not having problem to challenging ones. We are specialist in welded structures such as ones used in **big machinery** foundation.

We have **automated machinery** performed by robots that capabilities us to make short or long production series that may include a high number of welding cords, making it affordable and ensuring quality and stable performance.

LASER MIMAR personal counts with several welding certifications and homologations that capabilities us to execute your projects of any complexity.

We can weld almost any **metallic alloy with TIG, MIG or MAG techniques**. From small pieces to big machinery foundations or structures.

In addition, we have fully skilled welders that **can weld aluminum and other non ferric alloys**.



KUKA

BEHN
HINCHEN

LINCOLN
ELECTRIC

Fronius

Castolin Eutectic
Eutectic Castolin

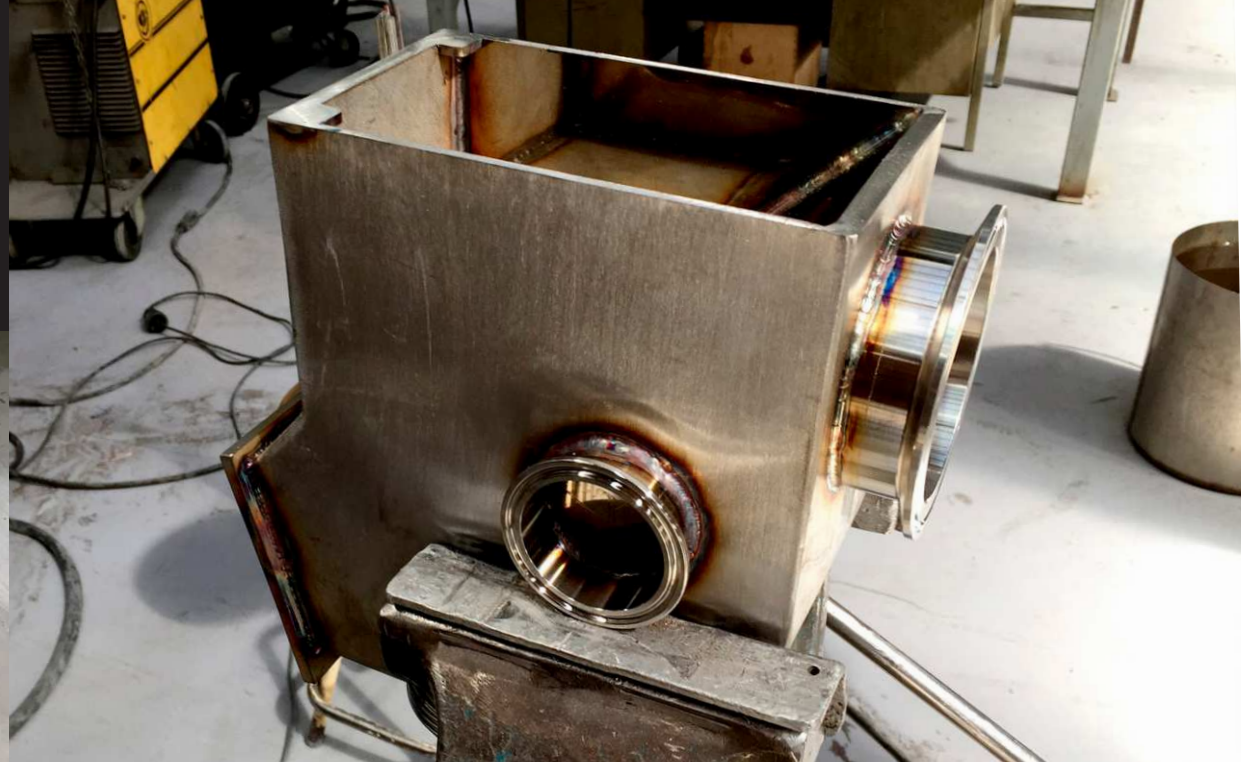


More information:
lasermimar.com/soldadura/



We have adopted the most recent welding solutions to be able to offer the best technologies in our projects.

— LASER MIMAR



COLD WELDING | ADHESIVE

LASER MIMAR has a highly skilled and trained personal that has certifications to include cold welding solutions in our technologies portfolio. We can face simple or complex assemblies to reach a final product with high quality and reduced costs.

Certifications and homologations available make us a top notch company to be your partner in all kind of metal assemblies.

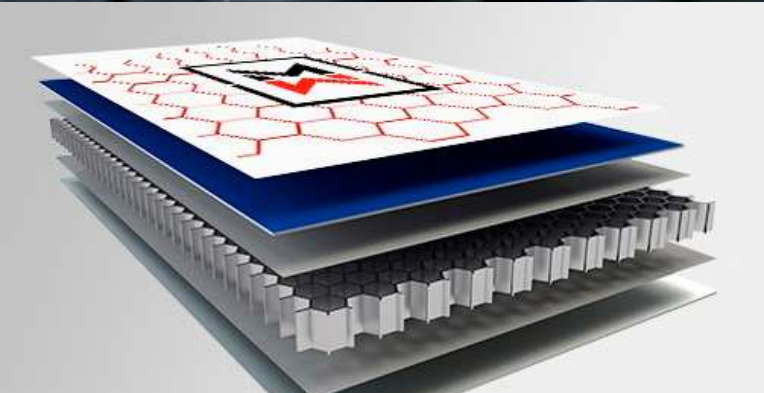
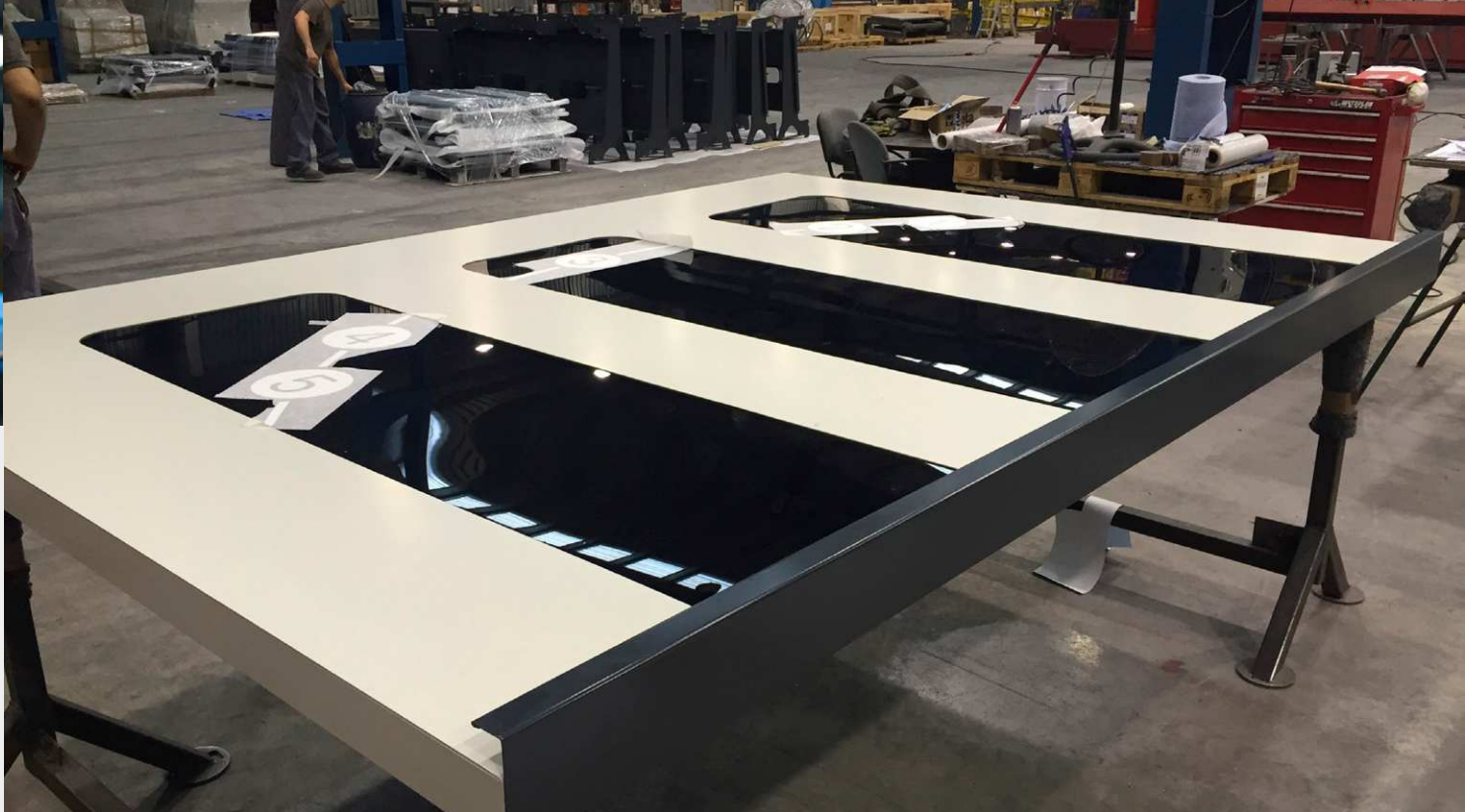
Advantages:

- > **Safety.** Sparks generation during welding process may be a risk for some kind of products or environments. With cold welding we avoid this risk completely.
- > **Time saving.** Standard welding requires a preparation and a process that may be longer in time than cold welding, moreover for some complex structures.
- > **Corrosion.** Traditional welding can cause corrosion issues that may be avoided with cold welding. In addition, not having to heat parts, the components will not have heat affected areas.

Cold welding is well considered as an alternative with good results and performance in many scenarios.



More information:
lasermimar.com/soldadura-fria/



We have adapted our company to new technologies arising in the market, so we can offer our customers the best results in cold welding.

— LASER MIMAR





PAINT & FINISH TREATMENTS

LASER MIMAR offers specific solutions for all those industrial sectors that request specific treatments with high demands. We have available our own **liquid paint facilities**, being capable of satisfying the most demanding sectors such as **railway industry**. We control all parameters of paint process: thickness, adhesion, scratch resistance, color, rust protection... It gives to the final part its **appearance and protection**.

Our factory is equipped with most advance technologies, including a **climate controlled paint cabin** where we can apply liquid paint. In addition, to add more flexibility to our process and offer cost saving solutions, we also have an aspirated floor area where all undesired smells and solvents are absorbed and treated to ensure workers health and wellbeing.

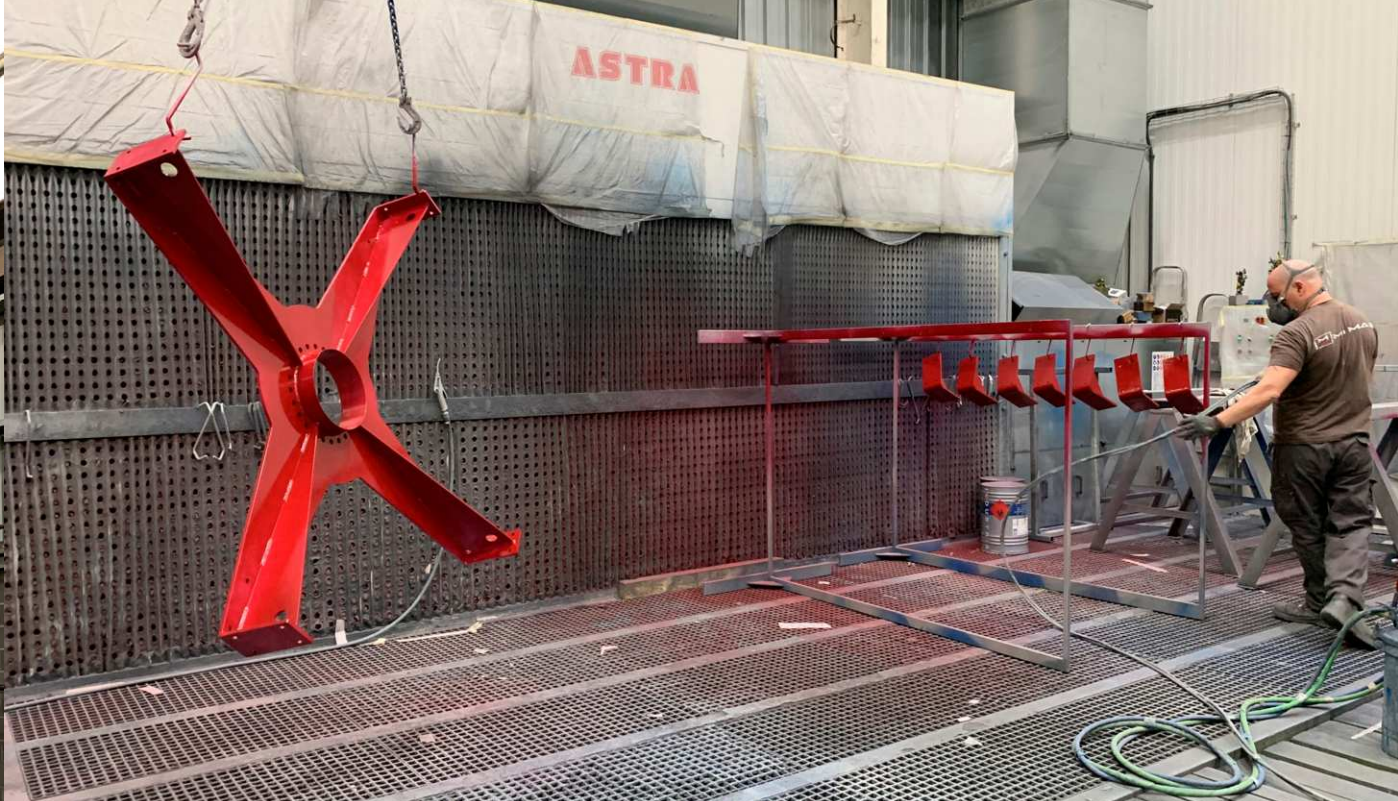
Liquid paint offers high quality finish with **stable results, quickly and efficiently**. It is a flexible technology for a process that can consider different volume projects having optimal results with very reduced costs.

All our painters have the **skills and experience** that guarantee an unbeatable aesthetical result with maximum quality.

ASTRA LAUNCH



More information:
lasermimar.com/pinturas/



LASER MIMAR offers its customers paints and finish with an integral service.

— LASER MIMAR





MACHINERY

Our **machinery and equipment** for metal forming allows **LASER MIMAR** to offer first class products and solutions. Machinery installed offers high efficiency processes for complex technical solutions.

We have been producing for metallurgy industry for more than 30 years, focused in sheet metal fabrication through **laser cut, bend, drill, rivet, weld and assemble**. We have the technical skills needed to face with guarantees the product development, the manufacturing preparation and the process optimization.

LASER MIMAR and **JG Automotive** offer manufacturing solutions based in the best machinery available in market and the most advanced technologies.



More information:
lasermimar.com/maquinaria-lasermimar/



Automatic Sheet Metal Forming

MACHINE	BRAND	MODEL
Robotized Cell	TRUMPF	TruBend Cell 5000
Automatic Folder	TRUMPF	TruBend Cell 5230
Automatic Folder	LVD	Tool Cell 220/30 – 36665

Automated Laser Cutting

MACHINE	BRAND	MODEL
TruLaser 3040	TRUMPF	4,000 x 2,000 x 25 (Fiber)
TruStore 3040	TRUMPF	3000 Series

Robotized Welding

MACHINE	BRAND	MODEL
TRUMPF Robot	TRUMPF (Fronius 5000)	TruArc Weld 1,000
MIG/MAG Welding Machine	Fronius	Transpuls Synergic 5000
KUKA	KUKA (Fronius 5000)	Robot with Track 7,000
+ 20 MIG / MAG / TIG Equipment		

CNC machining

MACHINE	BRAND	MODEL
HAAS UMC 500	HAAS	UMC 500 (5 axes)
HAAS VF-9	HAAS	VF-9 (3 AXIS)
HAAS VF-5	HAAS	VF-5 (3 AXIS)
(2x) HAAS VF-3	HAAS	VF-3 (3 AXIS)
HAAS ST-30 lathe	HAAS	ST-30
BIGLIA CNC lathe	BIGLIA	B-750 Y
BIGLIA CNC lathe	BIGLIA	B-565 YS

Paint

MACHINE	BRAND	MODEL
Paint booth	LAUNCH	CCH4000 – 11 x 5 m.
Suction Floor and Wall	ASTRA	6,000 x 3,000
Sandblasted	LMM	VPI2X1 STD-INOX
Sandblasted	LMM	SBF 10X8 INOX

Marking

MACHINE	BRAND	MODEL
Continuous wave laser	TRUMPF	TRUMPF TruMark 1110

Welding

MACHINE	BRANDS
+ 20 Automated Welding Equipment	<ul style="list-style-type: none"> ✓ Lincoln ✓ Lincoln Electric ✓ Lincoln Invertec ✓ Apasol ✓ CEA Compact ✓ Castolin Castotig ✓ Rehm-Apasol ✓ Fronius ✓ BTV Gmbh. ✓ ATS

PRODUCTS

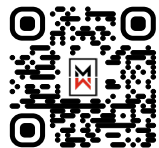
We carry out in **LASER MIMAR's** technical office all **engineering process** needed to develop products that will be finally produced in our factory.

Automated equipment and technical team allows us to offer high quality products as the best guarantee for our customers.

- > Machining
- > Machinery bench
- > Welded assemblies
- > Low pressure cylinders
- > High pressure cylinders
- > Frames
- > Train walls
- > Heat exchangers
- > Filters and valves
- > Product constructions



Preparation of **products for customers** at the **LASER MIMAR** factory.



More information:
lasermimar.com/productos/



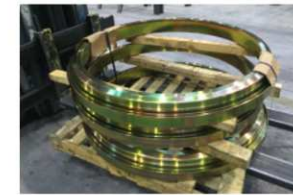
LASER MIMAR offers high quality products as the best guarantee for our customers.

— LASER MIMAR

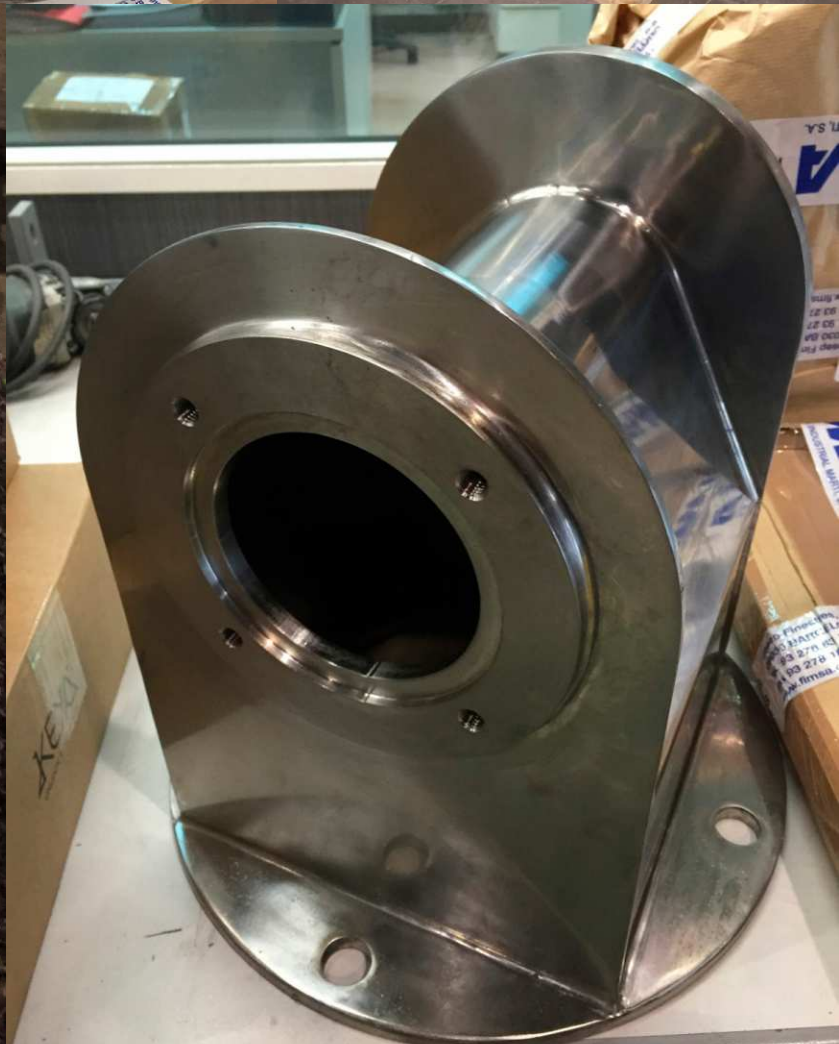
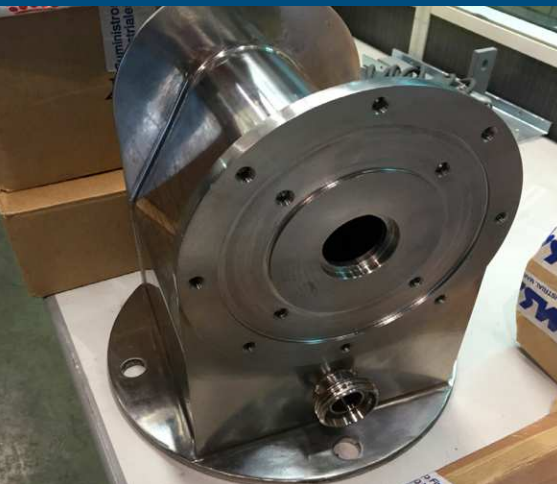


MACHINED PRODUCTS

In our design and engineering office we develop the necessary tasks for our **Machined Products** that will be developed later in our own factory.



More information:
lasermimar.com/productos-mecanizado/



MACHINE BENCH

In our design and engineering office we develop the necessary tasks for our **Machined Bench Products** that will be developed later in our own factory.



More information:
lasermimar.com/productos-bancadas/



WELDED ASSEMBLIES

In our design and engineering office we develop the necessary tasks for our **Welded Assemblies Products** that will be developed later in our own factory.



More information:
lasermimar.com/productos-conjuntos/



FRAMES

In our design and engineering office we develop the necessary tasks for our **Frame Products**, which are later developed in our own factory.



More information:
lasermimar.com/productos-carcasas/



ASSEMBLIES AND CONSTRUCTIONS

In our design and engineering office we develop the necessary tasks for our **Assembly and Construction Products** that will be developed later in our own factory.



More information:
lasermimar.com/productos-montajes/



FILTRES AND VALVES

In our design and engineering office we develop the necessary tasks for our **Filters and Valves**, which are then developed in our own factory.



More information:
lasermimar.com/productos-filtros-valvulas/



HIGH PRESSURE CYLINDERS

In our design and engineering office we develop the necessary tasks for our **High pressure cylinders**, which are then developed in our own factory.



More information:
lasermimar.com/productos-depositos-alta-presion/



LOW PRESSURE CYLINDERS

In our design and engineering office we develop the necessary tasks for our **Low pressure cylinders**, which are then developed in our own factory.



More information:
lasermimar.com/productos-depositos-baja-presion/



TRAIN WAGON WALLS

In our design and engineering office we develop the necessary tasks for our **Train Wagon walls**, which are then developed in our own factory.



More information:
lasermimar.com/productos-vagones-trenes/

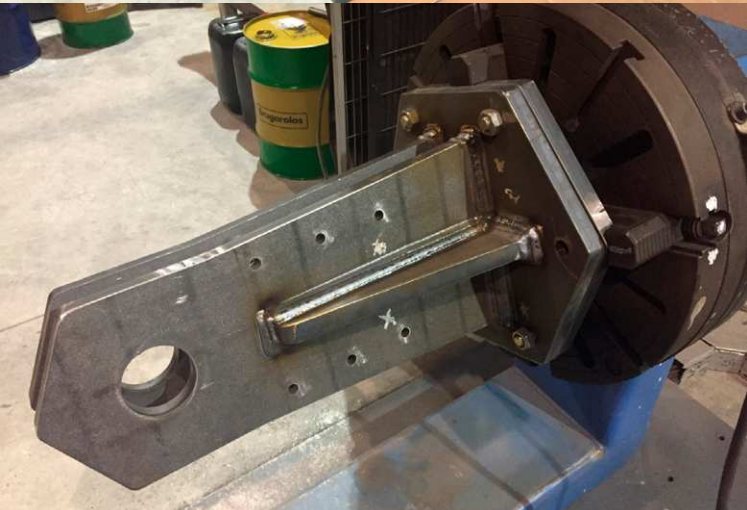
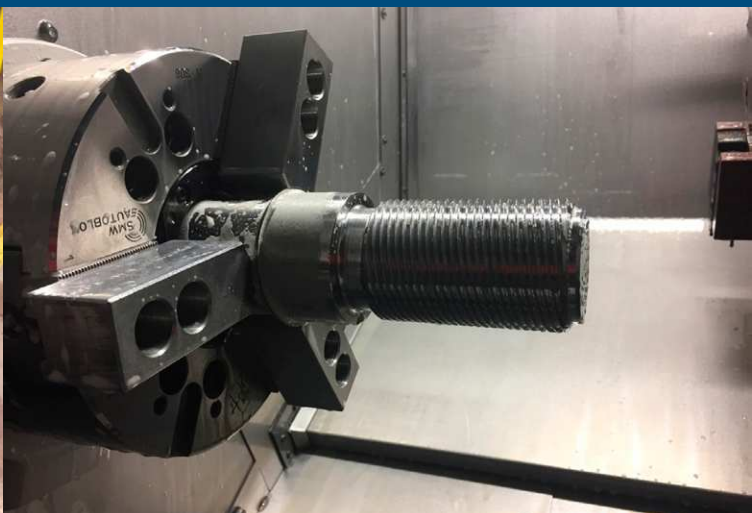


DIVERSE PRODUCTS

In our design and engineering office we develop the necessary tasks to develop **different kind of products**, in addition to ones already shown. All of them will be developed later in our own factory.



More information:
<https://lasermimar.com/productos-varios/>



CERTIFICATES

COMMITTED WITH EXCELLENCE

Working to achieve a management system focused in quality, years ago **LASER MIMAR** received accreditations and certifications related to its main activities, pursuing always to keep a continuous improvement in product and process:

— **EN 15085-2 CL1: 2007**



— **ISO 9001: 2015**



We have **qualified welding procedures** in accordance with **ASME IX, ISO 9606** and **ISO 15614**.



More information:
lasermimar.com/certificaciones/



CONTACT



ADDRESS:

Carrer Diesel, 1, Pol. Ind. 1
08150 Parets del Vallès, Barcelona
Spain

TELEPHONE:

(+34) 933 883 230

MAIL:

comercial@jgautomotive.com

WEB:

www.lasermimar.com



ADDRESS:

Avenida de la Industria, 32D
28108 Alcobendas, Madrid
Spain

TELEPHONE:

(+34) 916 572 874

MAIL:

comercial@jgautomotive.com

WEB:

www.jgautomotive.com



More information:
lasermimar.com/contacto/



MIMAR

JG AUTOMOTIVE
Your partner in metal solutions

www.lasermimar.com